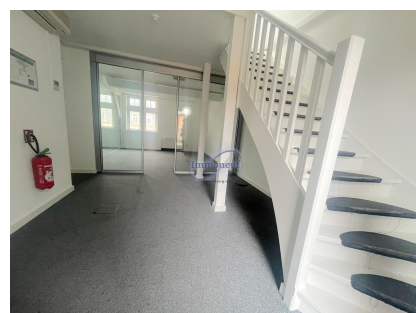




Office
100m²
Luxembourg

6 000€



DESCRIPTION

ENERGY PASS

This office is ideally located in the heart of the city center, just opposite the Place de Paris streetcar stop. The completely restructured building offers all modern conveniences, including an elevator, server space on each floor and a room dedicated to hosting the main server on the first floor. Currently, a total surface area of 200 m² is still available for rent, with the possibility of renting a single 100 m² floor. The price is negotiable if the tenant chooses to take the whole 200 m². Each floor is secured with its own access, toilet and storage space. The kitchen is located on the top floor, and the whole building is served by an elevator. A rare opportunity for companies looking to set up in Luxembourg in a modern, functional setting. For further information or to arrange a viewing, please contact us on 26 26 40 or by e-mail at immoneuf@pt.lu.

CHARACTERISTICS

Number of pieces : -
Nb. chamber (s) : -
Area : 100m²
Nb. of bathrooms : -
Equipped kitchen : Non



Immoneuf



28, rue des Bains L-1212



26 26 40



immoneuf@pt.lu



<https://www.immoneuf.lu/detail-2234822>