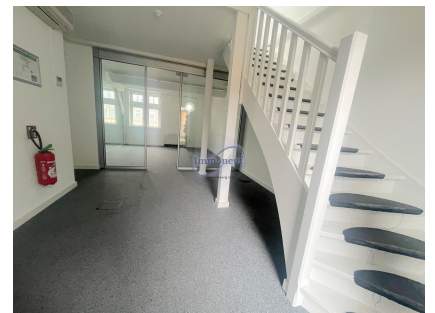




**Office**  
400m<sup>2</sup>  
Luxembourg

**20 000€**



This office is ideally located in the heart of the city center, just opposite the Place de Paris streetcar stop. The completely restructured building offers all modern conveniences inside. It is equipped with an elevator, server space on each floor and a room dedicated to hosting the main server on the first floor. The building comprises a total of 4 floors with a total surface area of 400 m<sup>2</sup>. It is also possible to rent a single 100 m<sup>2</sup> floor. The offices are available to rent immediately, offering a unique opportunity to establish your headquarters in Luxembourg. Space can be rented in its entirety or by floor. Each floor is secured with its own access, toilet and storage space. The kitchen is located on the top floor, and the entire building is served by elevator. A rare opportunity for companies wishing to establish themselves in Luxembourg in a modern and practical setting. For further information or to arrange a viewing, please contact us on 26 26 40 or by e-mail at [immoneuf@pt.lu](mailto:immoneuf@pt.lu).

## CHARACTERISTICS

Number of pieces : -  
Nb. chamber (s) : -  
Area : 400m<sup>2</sup>  
Nb. of bathrooms : -  
Equipped kitchen : Non

 **Immoneuf**

 **28, rue des Bains L-1212**

 **26 26 40**

 **[immoneuf@pt.lu](mailto:immoneuf@pt.lu)**

 **<https://www.immoneuf.lu/detail-2234819>**