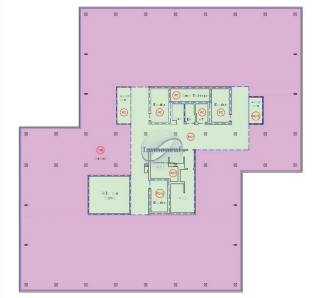
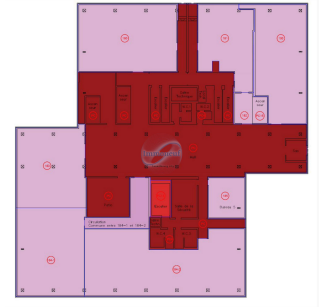




Office
31m²
Luxembourg

1 023€
Monthly charges : 264€



The RPK building is ideally located on the Kirchberg plateau, close to the motorway exit, the car park (P+R) and public transport. The Auchan shopping centre, with its many shops and restaurants, is in the immediate surroundings, offering maximum convenience to the occupants. Security and Accessibility:• Secure Reception: A security guard is present at reception from 07:00 to 22:00, ensuring a high level of security for occupants and visitors. • Secure Building Access: Advanced security systems for peace of mind. Features and Equipment:• Double Glazing: For optimal sound and thermal insulation. • Air Conditioning: Provides year-round thermal comfort. • Pre-wired: Computer and electrical wiring in place for easy installation. • Solid Carpet Flooring: Offering comfort and aesthetics while facilitating maintenance. • Subfloor: Allows maximum flexibility for space and cable routing. • Washrooms: Modern, well maintained facilities for occupant comfort. • Cold Beams: Efficient and modern cooling syst...

CHARACTERISTICS

Number of pieces : -
Nb. chamber (s) : -
Area : 31m²
Nb. of bathrooms : -
Equipped kitchen : Non

 **Immoneuf**

 **28, rue des Bains L-1212**

 **26 26 40**

 **immoneuf@pt.lu**

 **<https://www.immoneuf.lu/detail-2234744>**