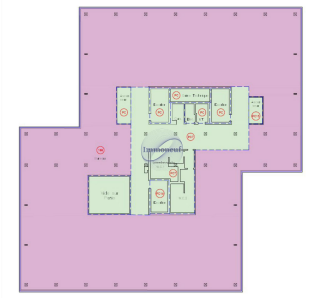
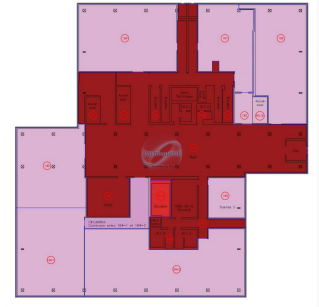




Office
252m²
Luxembourg

8 316€
Monthly charges : 2 142€



The RPK building is ideally located on the Kirchberg plateau, close to the motorway exit, the car park (P+R) and public transport. The Auchan shopping centre, with its many shops and restaurants, is in the immediate surroundings, offering maximum convenience to the occupants. Security and Accessibility: Secure Reception: A security guard is present at reception from 07:00 to 22:00, ensuring a high level of security for occupants and visitors. Secure Building Access: Advanced security systems for peace of mind. Features and Equipment: Double Glazing: For optimal sound and thermal insulation. Air Conditioning: Provides year-round thermal comfort. Pre-wired: Computer and electrical wiring in place for easy installation. Solid Carpet Flooring: Offering comfort and aesthetics while facilitating maintenance. Subfloor: Allows maximum flexibility for space and cable routing. Washrooms: Modern, well maintained facilities for occupant comfort. Cold Beams: Efficient and modern cooling syst...

CHARACTERISTICS

Number of pieces : -
Nb. chamber (s) : -
Area : 252m²
Nb. of bathrooms : -
Equipped kitchen : Non

 **Immoneuf**

 **28, rue des Bains L-1212**

 **26 26 40**

 **immoneuf@pt.lu**

 **<https://www.immoneuf.lu/detail-2234742>**