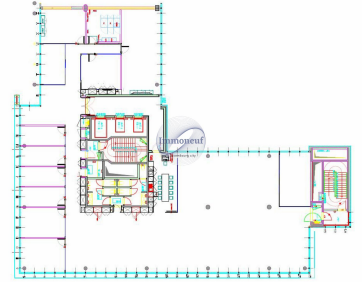




**Office**  
520m<sup>2</sup>  
Luxembourg

**18 720€**  
Monthly charges : 2 912€



The K2 Forte office building is part of a modern complex of six buildings developed by the Belgian real estate developer Codic, located in the dynamic Kirchberg district. The building is distinguished by its modular layout, offering excellent brightness and a modern and pleasant working environment, with high quality fittings. Features and Equipment: • Double Glazing: For optimal sound and thermal insulation. • Top Cooling: Advanced cooling system for consistent thermal comfort. • Parquet flooring: Adding a touch of elegance and warmth to workspaces. • Subfloor: Provides maximum flexibility for space and cable routing. • Washrooms: Modern, well maintained facilities for occupant comfort. • Fire Detection: Advanced system for occupant safety. • Cold Beams: Efficient and modern air conditioning system. • False Ceiling: Modern aesthetic and sound insulation. • Secure access to the Building: Ensuring the safety of occupants and their belongings. • BREEAM Excellent Certification: Recognizing commitment...

## CHARACTERISTICS

Number of pieces : -  
Nb. chamber (s) : -  
Area : 520m<sup>2</sup>  
Nb. of bathrooms : -  
Equipped kitchen : Non

 **Immoneuf**

 **28, rue des Bains L-1212**

 **26 26 40**

 **immoneuf@pt.lu**

 **<https://www.immoneuf.lu/detail-2234740>**