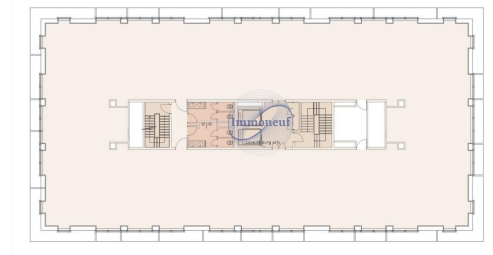
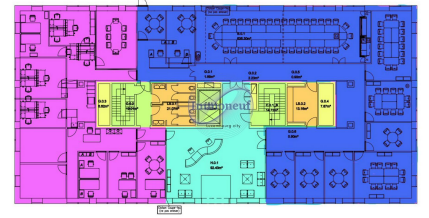




**Office**  
309m<sup>2</sup>  
Luxembourg

**10 506€**  
**Monthly charges : 2 163€**



Located close to the Auchan shopping centre and the Kirchberg public car park, this building built in 1992 offers remarkable accessibility and great parking flexibility. In 2012, the reception hall and common areas in the basement were completely renovated and modernized, creating a welcoming and contemporary setting from the entrance. Located in the dynamic business district of Kirchberg, this office space offers an ideal working environment. The offices are equipped to meet the needs of modern businesses: Features and Amenities: • Air Conditioning: Providing optimal comfort in all seasons. • Flooring: Solid carpet and subfloor, allowing flexibility and easy maintenance. • Partitioning: Possibility to divide the space according to specific needs. • Kitchenette: A convenient kitchen area for breaks and meals. • Washrooms: Modern, well maintained washrooms. • Local IT: Dedicated space for IT equipment. • Ventilation: Effective ventilation system for a healthy environment. • False Ceiling: Contribu...


## CHARACTERISTICS

Number of pieces : -  
Nb. chamber (s) : -  
Area : 309m<sup>2</sup>  
Nb. of bathrooms : -  
Equipped kitchen : Non

 **Immoneuf**

 **28, rue des Bains L-1212**

 **26 26 40**

 **immoneuf@pt.lu**

 **<https://www.immoneuf.lu/detail-2234729>**