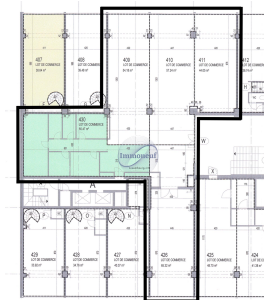




**Office**  
286m<sup>2</sup>  
Luxembourg-Centre

**9 500€**



## DESCRIPTION

## ENERGY PASS

Available from October, this exceptional 286 m<sup>2</sup> office offers a unique opportunity to establish your business in the prestigious Bâtiment Forum Royal, ideally located opposite the Hôtel Royal and the main boulevard in the heart of Luxembourg. With its privileged strategic position and numerous advantages, this office is an ideal choice for your business. You can also rent parking spaces in the same building. Its proximity to public transport and the main roads further enhances its advantages, making it the perfect choice for your company's needs. Don't miss this unique opportunity. Contact us today for more information or to arrange a viewing: 26.26.40 or [immoneuf@pt.lu](mailto:immoneuf@pt.lu).

## CHARACTERISTICS

Number of pieces : -  
Nb. chamber (s) : -  
Area : 286m<sup>2</sup>  
Nb. of bathrooms : -  
Equipped kitchen : Non

✓ Immoneuf

📍 28, rue des Bains L-1212

📞 26 26 40

✉ [immoneuf@pt.lu](mailto:immoneuf@pt.lu)

🌐 <https://www.immoneuf.lu/detail-2234724>