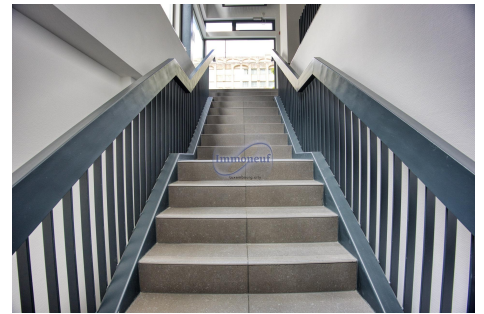




**Office**  
500m<sup>2</sup>  
Luxembourg

**6 000 000€**



## DESCRIPTION

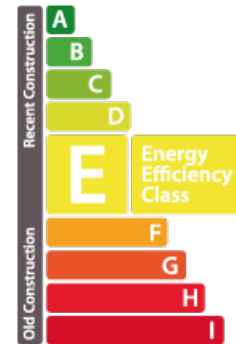
Located in the emblematic Forum Royal building, this 500 m<sup>2</sup> office spans two floors plus a basement, offering great flexibility in terms of layout. The strategic location on the Boulevard Royal guarantees exceptional visibility and frequent foot traffic, ideal for attracting a varied clientele. The office benefits from excellent public transport links, making it easy for your employees and customers to get to and from work. Available immediately, this space is ready to welcome your commercial projects without delay. All types of business are permitted, including catering establishments, making this an exceptional investment opportunity for entrepreneurs and investors looking for a prestigious, central location in Luxembourg City. Don't miss this unique opportunity to establish your business in a dynamic and prosperous setting. Availability: Immediate Business authorization: All types of business authorized, including Horeca For further information, please contact us on 26.26.40 or by e-ma...

## CHARACTERISTICS

Number of pieces : 14  
Nb. chamber (s) : -  
Area : 500m<sup>2</sup>  
Nb. of bathrooms : 3  
Equipped kitchen : Non

## ENERGY PASS

### Energy class



✓ Immoneuf

📍 28, rue des Bains L-1212

📞 26 26 40

✉ immoneuf@pt.lu

🌐 <https://www.immoneuf.lu/detail-2234708>