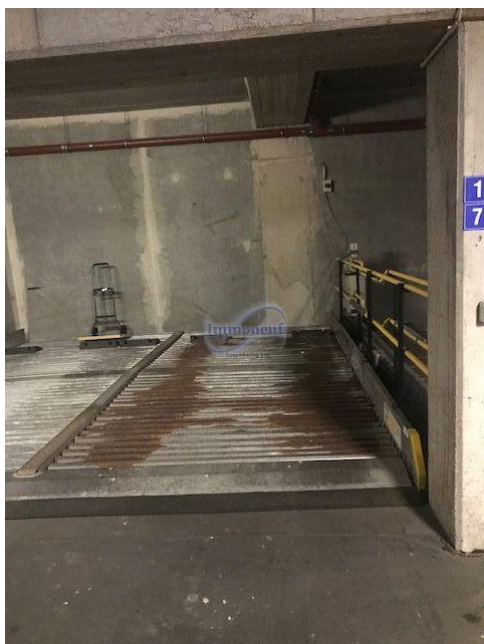




Garage

Luxembourg-Belair

220€



DESCRIPTION

A parking place, very well located between Merl and Belair. Available immediately.
Agency fee: 200€+17% TVA=234€

ENERGY PASS

CHARACTERISTICS

Number of pieces : -
Nb. chamber (s) : -
Area : -
Nb. of bathrooms : -
Equipped kitchen : Non

✓ Immoneuf

📍 28, rue des Bains L-1212

📞 26 26 40

✉ immoneuf@pt.lu

🌐 <https://www.immoneuf.lu/detail-2234545>