



**Apartment**  
46.51m<sup>2</sup> 1 Bedroom(s)  
Luxembourg-Cents

**548 818€**



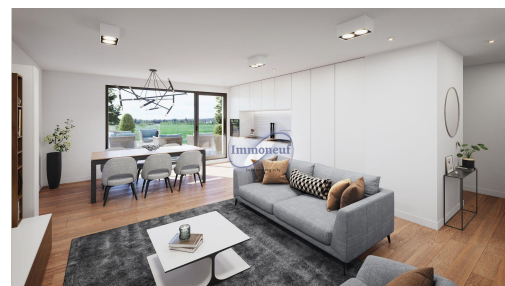
31  
appartements  
de 35 à 86 m<sup>2</sup>

AAA  
classe  
énergétique

**RÉSIDENCE  
MANSFELD**  
Luxembourg-Cents

Projet  
très haut  
standing

Lignes  
contemporaines



We would like to present you our new residential project, called "MANSFELD" in Luxembourg-Cents (rue Cents) which offers you very high standard services with contemporary lines. Designed in an energy class AAA, low energy consumption, the residence offers you: 31 apartments (living surface between +/- 35,66 m<sup>2</sup> and 86,17m<sup>2</sup>) with terraces / balconies, gardens, parking spots (available from 43 065,00€) and individual cellars (available from 8 520,00 €). The sale prices are published excluding VAT. The residence named "MANSFELD" is located a few minutes by car from Luxembourg City Center, close to the airport and it offers you very easy access to public transport to the city and to highways.

## CHARACTERISTICS

Number of pieces : -

Nb. chamber (s) : 1

Area : 46.51m<sup>2</sup>


Nb. of bathrooms : 1

Equipped kitchen : Non

 **Immoneuf**

 **28, rue des Bains L-1212**

 **26 26 40**

 **immoneuf@pt.lu**

 **<https://www.immoneuf.lu/detail-2234533>**