



Apartment
82m² 2 Bedroom(s)
Luxembourg-Cents

1 068 952€



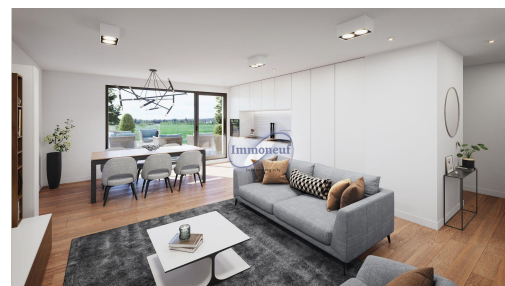
31
appartements
de 35 à 86 m²

AAA
classe
énergétique

**RÉSIDENCE
MANSFELD**
Luxembourg-Cents

Projet
très haut
standing

Lignes
contemporaines



DESCRIPTION

We would like to present you our new residential project, called "MANSFELD" in Luxembourg-Cents (rue Cents) which offers you very high standard services with contemporary lines. Designed in an energy class AAA, low energy consumption, the residence offers you: 31 apartments (living surface between +/- 35,66 m² and 86,17m²) with terraces / balconies, gardens, parking spots (available from 43 065,00€) and individual cellars (available from 8 520,00 €). The sale prices are published excluding VAT. The residence named "MANSFELD" is located a few minutes by car from Luxembourg City Center, close to the airport and it offers you very easy access to public transport to the city and to highways.

CHARACTERISTICS

Number of pieces : -
Nb. chamber (s) : 2
Area : 82m²
Nb. of bathrooms : -
Equipped kitchen : Non

✓ Immoneuf

📍 28, rue des Bains L-1212

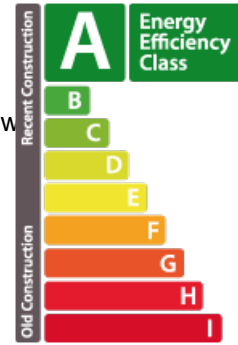
📞 26 26 40

✉ immoneuf@pt.lu

🌐 <https://www.immoneuf.lu/detail-2234498>

ENERGY PASS

Energy class



Thermal insulation class



CO2 emissions Class

