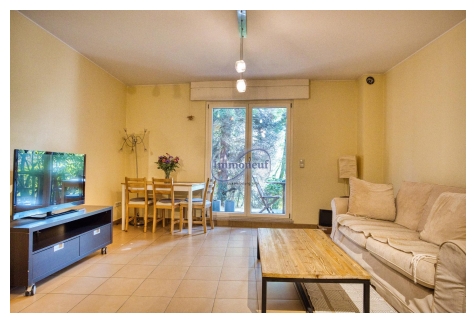
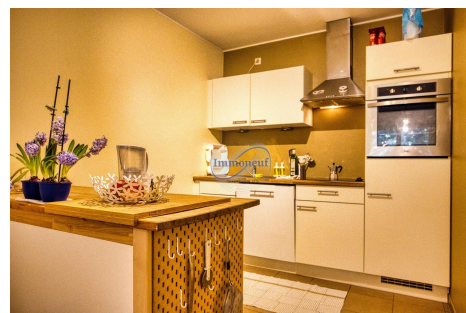




Apartment
55m² 1 Bedroom(s)
Luxembourg-Limpertsberg

1 850€
Monthly charges : 180€



DESCRIPTION

ENERGY PASS

This large 55 m² furnished studio is located on the first floor of a luxury residence. It features an entrance hall, a bright main room opening onto a fully-equipped kitchen, and direct access to an unoverlooked wooden terrace, ideal for enjoying a quiet setting just a stone's throw from the gardens. The studio is furnished to a high standard, ensuring comfort and practicality. It also includes a shower room, separate toilet and cellar. The studio will be available from March 1, 2025. It is located close to the Tony Neuman park and the university, in a pleasant, well-connected neighborhood.


CHARACTERISTICS

Number of pieces : -
Nb. chamber (s) : 1
Area : 55m²
Nb. of bathrooms : -
Equipped kitchen : Oui

 **Immoneuf**

 **28, rue des Bains L-1212**

 **26 26 40**

 **immoneuf@pt.lu**

 **<https://www.immoneuf.lu/detail-2233523>**